

Appendix D-4: Archaeological Letter of Exemption



EASTERN CAPE

HERITAGE CONSULTANTS CC

REG. NO: 2006/088345/23

6 GRACELAND VILLAS ♦ WARATAH STREET ♦ WAVECREST ♦ JEFFREYS BAY ♦ 6330
CELL: 072 800 6322 ♦ E-MAIL: kobusreichert@yahoo.com

*Encephalartos
longifolius*

8 November 2024

CEN Integrated Environmental Management Unit
140 Kruger Gardens
Admiralty Way
Summerstrand
Gqeberha (Port Elizabeth)
6001

For attention: Ms. Lucille Behrens

INITIAL ARCHAEOLOGICAL SITE VERIFICATION AND REPORT FOR THE PROPOSED DEVELOPMENT OF THE NEW OCEANVIEW COLLECTOR SEWER LINE ON SEVERAL PORTIONS OF THE FARM ESTATE KLEIN ZEEKOEI RIVIER NO. 335 AND ERF 7907, KOUGA LOCAL MUNICIPALITY, EASTERN CAPE PROVINCE.

CEN Integrated Environmental Management appointed Eastern Cape Heritage Consultants cc to do an initial site verification for the above project.

The site has been classified as having a low archaeological/cultural sensitivity by the Department of Forestry, Fisheries & Environment (DFFE) on-line screening tool. No specific protocol has been developed for archaeology, and the "General Requirements" protocol applies. In summary, the protocol indicates that the following must be done:

1. Step 1: initial site verification – confirm sensitivity rating (or indicate otherwise)
2. Step 2:
 - a. If site verification confirms high sensitivity, do specialist study and comply with Appendix 6 of the EIA Regulations (i.e. requirements for specialist studies)
 - b. If site verification shows that the site is not high sensitivity, compile an **Archaeological/Cultural Heritage Compliance Statement**

A site visit was conducted by an archaeologist on 17 October 2024 and it has been concluded that the site is of **low cultural sensitivity** - See attached Letter of Recommendation (with conditions).

Archaeological/Cultural Heritage Compliance Statement

Should any archaeological remains be exposed during the development all work must cease in the immediate area and it must be reported to the Albany Museum (Tel: 046 622 2312) or to the Eastern Cape Provincial Heritage Resources Authority (Tel: 043 492 1370), so that a systematic and professional investigation can be undertaken.

Best Regards

Kobus Reichert

A LETTER OF RECOMMENDATION (WITH CONDITIONS) FOR THE EXEMPTION OF A FULL PHASE 1 ARCHAEOLOGICAL IMPACT ASSESSMENT FOR THE PROPOSED DEVELOPMENT OF THE NEW OCEANVIEW COLLECTOR SEWER LINE ON SEVERAL PORTIONS OF THE FARM ESTATE KLEIN ZEEKOEI RIVIER NO. 335 AND ERF 7907 IN JEFFREYS BAY, KOUGA LOCAL MUNICIPALITY, EASTERN CAPE PROVINCE.



Prepared for: CEN Integrated Environmental Management Unit
140 Kruger Gardens
Admiralty Way
Summerstrand
Gqeberha (Port Elizabeth)
6001
Cell: 082 922 1645
Contact person: Ms. Lucille Behrens
Email: lucille@environmentcen.co.za

Compiled by: Mr. Kobus Reichert

On behalf of: Eastern Cape Heritage Consultants cc
Reg. no: 2006/088345/23
P.O. Box 689
Jeffreys Bay
6330
Cell: 072 800 6322
Email: kobusreichert@yahoo.com

Date: November 2024

PROJECT INFORMATION

Eastern Cape Heritage Consultants cc has been appointed by CEN Integrated Environmental Management Unit to conduct an archaeological impact assessment for the proposed development of the new Oceanview Collector Sewer line on several portions of the Farm Estate Klein Zeekoei Rivier No. 335 and Erf 7907 in Jeffreys Bay, Kouga Local Municipality, Eastern Cape Province.

The proposed Oceanview Collector Sewer will consist of sewer pipelines ranging from 160 mm to 315 mm in diameter over a total length of approximately 1500 meters. The existing sewer pipelines blocks constantly and a collector sewer within the road reserve is proposed to reduce flow in the midblock sewer reticulation area.

The pipeline along Rolihlanhla Street is a new pipeline within the road verge / reserve, with diameters of 160 - 200 mm and over a length of approximately 550 meters. The pipeline then turns and runs along Dolphin Drive for approximately 690 meters, with diameters ranging from 200 - 315 mm. This section of the pipeline will be located adjacent to the existing sewer pipeline, within the road reserve / verge. The pipeline then turns and follows an existing gravel road for approximately 100m and then turns and ties into the existing sewer pumpstation. No works / capacity increase is proposed for the existing Oceanview Sewer Pumpstation.

Applicant

Kouga Local Municipality

Consultant

CEN Integrated Environmental Management Unit
 140 Kruger Gardens
 Admiralty Way
 Summerstrand
 Gqeberha (Port Elizabeth)
 6001
 Cell: 082 922 1645
 Contact person: Ms. Lucille Behrens
 Email: lucille@environmentcen.co.za

Purpose of the study

The purpose of the study was to conduct an archaeological impact assessment for the proposed project and the associated activities, to describe and evaluate:

- the importance of possible archaeological sites, features and materials,
- the potential impact of the development on these resources and,
- to propose recommendations to minimize possible damage to these resources.

Site and Location

The proposed development area is located within the 1:50 000 topographic reference map 3424BB Humansdorp (Map 1). The start of the proposed Oceanview Collector Sewer line is located in the Oceanview Township less than a kilometer from the Jeffreys Bay town center. The pipeline route runs along the road verge reserve of a tar road before it follows a gravel road reserve along Dolphin Road until it reaches the Oceanview Sewer Pumpstation between Oceanview Township and Aston Bay. The entire pipeline route has been disturbed in the past as a result of road construction as well as the construction of the original pipeline. The pipeline

route along Dolphin Road is mostly covered by short grass and high trees in places. Denser vegetation consisting of grass and low shrubs is present in a small area just before the proposed pipeline reaches the Oceanview Sewer Pumpstation.

General GPS readings were taken at: 34.3.389S, 24.54.519E (Oceanview Township), and 34.3.892S, 24.54.366E (Oceanview Sewer Pumpstation).

The following properties will be affected by the proposed development:

Portion 62 of the Farm Estate Klein Zeekoei Rivier No. 335	Portion 125 of the Farm Estate Klein Zeekoei Rivier No. 335
Portion 63 of the Farm Estate Klein Zeekoei Rivier No. 335	Erf 7907, Jeffreys Bay
Portion 122 of the Farm Estate Klein Zeekoei Rivier No. 335	

Relevant Archaeological Impact Assessments

- Binneman, J. 2018. A Phase 1 Archaeological re-assessment of the proposed establishment of an eco-residential development on the Remainder of the Farm Swanlake No. 755, Aston Bay in the Kouga Local Municipality of the Eastern Cape. Prepared for Cape EAPrac (Pty) Ltd. Eastern Cape Heritage Consultants. Jeffreys Bay.
- Binneman, J. 2008a. A phase 1 archaeological heritage impact assessment of the proposed establishment of eco-residential units on Portion 2 of the farm Swan Lake No. 755, Aston Bay, Kouga Municipality, Eastern Cape Province. Prepared for Coastal & Environmental Services. Grahamstown. Eastern Cape Heritage Consultants. Jeffreys Bay.
- Binneman, J. 2008b. A phase 1 archaeological heritage impact assessment of the proposed rezoning, subdivision and development of the Remainder of the farm Zeekoei River No. 693 near Paradysstrand (Kouga Municipality), from agriculture to residential zone i & ii, resort zone ii, business zone i and authority zone and to create a residential area, golf estate, business centre and air park. Prepared for Gertenbach Ecological Consultations. Jeffreys Bay. Eastern Cape Heritage Consultants. Jeffreys Bay.
- Binneman, J. 2008c. Letter of recommendation (with conditions) for the exemption of a full phase 1 archaeological heritage impact assessment for the proposed Boplaas development on Portion 67 (a portion of Portion 57) of the Farm Klein Zeekoei River No. 335, Jeffreys Bay, Kouga Municipality, District of Humansdorp, Eastern Cape. Prepared for Pieter Badenhorst Professional Services. Wellington. Eastern Cape Heritage Consultants. Jeffreys Bay.
- Binneman, J. 2008d. A phase 1 archaeological heritage impact assessment for the proposed Kouga Wind Energy project near Jeffreys Bay, Kouga Municipality, District of Humansdorp, Eastern Cape. Prepared for the CSIR. Stellenbosch. Eastern Cape Heritage Consultants. Jeffreys Bay.
- Binneman, J. 2007. Letter of recommendation (with conditions) for the exemption of a full phase 1 archaeological heritage impact assessment for the proposed new pump station and rising main in Ocean View, Jeffreys Bay, Kouga Municipality, Eastern Cape. Prepared for Geological & Environmental Services (GES). Greenacres. Eastern Cape Heritage Consultants. Jeffreys Bay.
- Binneman, J. 2006a. A phase 1 archaeological heritage impact assessment for the proposed rezoning and subdivision of Portion 1 (the Fountains) of the Farm Klein Zeekoei River No. 335 in Jeffreys Bay, Kouga Municipality, District of Humansdorp, Eastern Cape. Prepared for CEN Integrated Environmental Management Unit. Walmer.

- Binneman, J. 2006b. Letter of recommendation (with conditions) for the exemption of a full phase 1 archaeological heritage impact assessment for the subdivision and rezoning of 40 ha of Portion 123 (portion of Portion 67) of the Farm Estate Klein Zeekoei Rivier No. 335, Humansdorp District (Kouga Municipality), from Agricultural use to Industrial Zone 1. Prepared for Gertenbach Ecological Consultations. Jeffreys Bay.
- Binneman, J and Reichert, K. 2021. A letter of recommendation (with conditions) for the exemption of a full phase 1 archaeological impact assessment for the proposed extension of Duine Weg Road between Pellsrus and Marina Martinique in Jeffreys Bay, Kouga Local Municipality, Eastern Cape Province. Prepared for: J.G Afrika (Pty) Ltd. Greenacres. Eastern Cape Heritage Consultants. Jeffreys Bay.
- Binneman, J and Reichert, K. 2018. A letter of recommendation (with conditions) for the exemption of a full phase 1 archaeological impact assessment for the proposed construction of a single residential dwelling on Erf 833, Paradise Beach, Kouga Local Municipality, Eastern Cape Province. Prepared for MIM Environmental Consulting. Jeffreys Bay. Eastern Cape Heritage Consultants. Jeffreys Bay.
- Binneman, J and Reichert, K. 2017. A walkthrough of *Site Exigo-KOD-SA01* in the proposed Oceanview township development project at Jeffreys Bay in the Kouga Local Municipality of the Eastern Cape Province. Prepared for AGES Omega Ltd. East Londen. Eastern Cape Heritage Consultants. Jeffreys Bay.
- Binneman, J and Reichert, K. 2016a. A letter of recommendation (with conditions) for the exemption of a full phase 1 archaeological impact assessment for the proposed construction of a residential dwelling on Erf 649, Paradise Beach, Kouga Local Municipality, Eastern Cape Province. Prepared for MIM Environmental Consulting. Jeffreys Bay. Eastern Cape Heritage Consultants. Jeffreys Bay.
- Binneman, J and Reichert, K. 2016b. A letter of recommendation (with conditions) for the exemption of a full phase 1 archaeological impact assessment for the proposed mining of calcrete on the Remaining Extent of the farm Zeekoe Rivier No. 693, Division of Humansdorp, Kouga Local Municipality Eastern Cape Province. Prepared for Stellenryck Environmental Solutions. Lorraine. Eastern Cape Heritage Consultants. Jeffreys Bay.
- Reichert, K. 2024. A phase 1 archaeological impact assessment for the proposed establishment of an industrial development zone on Portion 123 of the Farm Estate Klein Zeekoei Rivier No. 335 near Jeffreys Bay, Kouga Local Municipality, Eastern Cape Province. Prepared for: Habitat Link Consulting. Mount Croix. Eastern Cape Heritage Consultants. Jeffreys Bay.
- Reichert, K. 2023. A letter of recommendation (with conditions) for the exemption of a full phase 1 archaeological impact assessment for the proposed upgrading of the Jeffreys Bay Sewer Rising Main on Erf 1344 and 913, Jeffreys Bay, Portions 125, 1, 2 and 78 of the Farm Estate Klein Zeekoei Rivier No. 335, Kouga Local Municipality, Eastern Cape Province. Prepared for: CEN Integrated Environmental Management Unit. Summerstrand. Eastern Cape Heritage Consultants. Jeffreys Bay.
- Kaplan, J. 2016. Proposed 66 KV overhead line servitudes and substations Jeffreys Bay, Eastern Cape. Prepared for Pieter Badenhorst Professional Services. Wellington. ACRM. Rondebosch.
- Kruger, N. 2017. Archaeological impact assessment (AIA) of a Portion of Erf 9932 Oceanview for the proposed Oceanview extension residential and mixed use development project, Jeffreys Bay, Kouga Local Municipality, Eastern Cape Province. Prepared for AGES Omega Ltd. East Londen. Exigo Sustainability. Arcadia.
- Webley, L.E. 2006. Heritage assessment of Jubilee Estate, the Farm Seekoeirivier No.355. Prepared for Ecological Management Services, Kimberley. Albany Museum. Grahamstown.

ARCHAEOLOGICAL INVESTIGATION

Methodology and results

Google aerial images as well as previous heritage reports related to the study area were studied prior

to the investigation. The investigation was conducted on foot and by vehicle by an archaeologist. GPS readings were taken with a Garmin eTREX 22x and all important features were digitally recorded. The archaeological visibility was relatively good along the majority of the proposed pipeline route and no archaeological sites/materials were observed within the proposed development area. Molehills that occur along Dolphin Road were also checked for the presence of possible subsurface archaeological material. The proposed pipeline route falls within in an area that has been disturbed in the past by other activities. In general, the area for the proposed development appears to be of low archaeological sensitivity and it is unlikely that any archaeological remains of any significance will be found *in situ* or exposed during the development. There are no known graves or buildings / structures older than 60 years along the proposed pipeline route.



Figure 1. General views of the proposed pipeline route along Rolihlanhla Street in the Oceanview Township in Jeffreys Bay. The approximate location of the proposed pipeline route is indicated with the red arrows.



Figure 2. General view of the proposed pipeline route where it turns from Rolihlanhla Street in Oceanview Township and then runs along Dolphin Drive.



Figure 3. General views of the proposed pipeline route along Dolphin Drive (top image) and then runs along a gravel road before it joins the Oceanview Sewer Pumpstation (bottom image). The approximate location of the proposed pipeline route is indicated with the red arrow

DISCUSSION AND CONDITIONS

No archaeological sites/materials were observed during the investigation of the proposed study area. Although it is unlikely that archaeological remains will be found *in situ*, there is always a possibility that human remains and/or other archaeological and historical material may be uncovered during the development.

Several archaeological assessments have been conducted in the general area of the proposed development (Map 3). In some of the assessments conducted in close proximity to Dolphin Road only isolated Earlier Stone Age (ESA) and Middle Stone Age (MSA) tools were identified. These finds were not *in situ* and it were not associated with any other cultural material (Binneman 2006a; 2006b; 2007; 2008c, 2008d, Kruger 2017, Reichert 2023 & 2024, Webley 2006). A letter of recommendation (with conditions) for the exemption of a full Phase 1 Archaeological Impact Assessment was also issued for one of these projects that included an assessment of the route for the existing sewer pipeline along Dolphin Drive as well as the location of the Oceanview Sewer Pumpstation (Binneman 2007). The majority of the development area does however fall within the 5 kilometer radius from the coast that is regarded as an archaeological sensitive zone where archaeological sites / material such as shell middens can be expected..

The main impact on possible archaeological sites/remains will be the physical disturbance of the material and its context. Should such material be exposed then work must cease in the immediate area and it must be reported to the archaeologist at the Albany Museum in Makhanda (Grahamstown) (Tel: 046 622 2312) or to the Eastern Cape Provincial Heritage Resources Authority (Tel.: 043 492 1370), so that a systematic and professional investigation can be undertaken. Sufficient time should be allowed to remove/collect such material (See Appendix B for a list of possible archaeological sites that maybe found in the area). The applicant must finance the costs should additional investigations be required.

LETTER OF RECOMMENDATION

It is recommended that the proposed development of the new Oceanview Collector Sewer line on several portions of the Farm Estate Klein Zeekoei Rivier No. 335 and Erf 7907 in Jeffreys Bay, Kouga Local Municipality, Eastern Cape Province, is exempted from a full Phase 1 Archaeological Heritage Impact Assessment. The proposed development area appears to be of **low archaeological sensitivity**, and it is therefore unlikely that any significant archaeological remains will be found on the property. The proposed development may therefore proceed as planned.

Note: This letter of recommendation only exempts the proposed development from a full Phase 1 Archaeological Heritage Impact Assessment, but not for other heritage impact assessments. It must also be clear that this letter will be assessed by the relevant heritage resources authority. The final decision rests with the heritage resources authority, which should give a permit or a formal letter of permission for the destruction of any cultural sites.

Section 35 of the National Heritage Resources Act, No. 25 of 1999 (see Appendix A) requires a full Heritage Impact Assessment (HIA) in order that all heritage resources, that is, all places or objects of aesthetics, architectural, historic, scientific, social, spiritual linguistic or technological value or significance are protected. Thus, any assessment should make provision for the protection of all these heritage components, including archaeology, shipwrecks, battlefields, graves, and structures older than 60 years, living heritage, historical settlements, landscapes, geological sites, palaeontological sites and objects.

GENERAL REMARKS AND CONDITIONS

It must be emphasized that this letter of recommendation for the exemption of a full Phase 1 archaeological heritage impact assessment is based on the visibility of archaeological sites/material and may not therefore, reflect the true state of affairs. Sites and material may be covered by soil and vegetation and will only be located once this has been removed. In the unlikely event of such finds being uncovered, (during any phase of the activities), it must be reported to the archaeologist at the Albany Museum in Makhanda (Grahamstown) (Tel: 046 622 2312) or to the Eastern Cape Provincial Heritage Resources Authority (Tel.: 043 492 1370) immediately. The developer must finance the costs should additional studies be required as outlined above. The consultant is responsible to forward this report to the relevant Heritage Authority for assessment, unless alternative arrangements have been made with the specialist to submit the report.

APPENDIX A: brief legislative requirements

Parts of sections 34, 35(4), 36(3) and 38(1) (8) of the National Heritage Resources Act, No. 25 of 1999 apply:

Structures

34 (1) No person may alter or demolish any structure or part of a structure which is older than 60 years without a permit issued by the relevant provincial heritage resources authority.

Archaeology, palaeontology and meteorites

35 (4) No person may, without a permit issued by the responsible heritage resources authority—

- (a) destroy, damage, excavate, alter, deface or otherwise disturb any archaeological or palaeontological site or any meteorite;*
- (b) destroy, damage, excavate, remove from its original position, collect or own any archaeological or palaeontological material or object or any meteorite;*
- (d) bring onto or use at an archaeological or palaeontological site any excavation equipment or any equipment which assist in the detection or recovery of metals or archaeological and palaeontological material or objects, or use such equipment for the recovery of meteorites.*

Burial grounds and graves

36. (3) (a) No person may, without a permit issued by SAHRA or a provincial heritage resources authority—

- (a) destroy, damage, alter, exhume or remove from its original position or otherwise disturb the grave of a victim of conflict, or any burial ground or part thereof which contains such graves;*
- (b) destroy, damage, alter, exhume, remove from its original position or otherwise disturb any grave or burial ground older than 60 years which is situated outside a formal cemetery administered by a local authority; or*
- (c) bring onto or use at a burial ground or grave referred to in paragraph (a) or (b) any excavation equipment, or any equipment which assists in the detection or recovery of metals.*

Heritage resources management

38. (1) Subject to the provisions of subsections (7), (8) and (9), any person who intends to undertake a development categorized as –

- (a) the construction of a road, wall, powerline, pipeline, canal or other similar form of linear*

- development or barrier exceeding 300m in length;*
- (b) the construction of a bridge or similar structure exceeding 50m in length;*
 - (c) any development or other activity which will change the character of the site –*
 - (i) exceeding 5000m² in extent, or*
 - (ii) involving three or more erven or subdivisions thereof; or*
 - (iii) involving three or more erven or divisions thereof which have been consolidated within the past five years; or*
 - (iv) the costs of which will exceed a sum set in terms of regulations by SAHRA, or a provincial resources authority;*
 - (d) the re-zoning of a site exceeding 10 000m² in extent; or*
 - (e) any other category of development provided for in regulations by SAHRA or a provincial heritage resources authority, must as the very earliest stages of initiating such a development, notify the responsible heritage resources authority and furnish it with details regarding the location, nature and extent of the proposed development.*

APPENDIX B: IDENTIFICATION OF ARCHAEOLOGICAL FEATURES AND MATERIAL FROM COASTAL AREAS: guidelines and procedures for developers

Shell middens

Shell middens can be defined as an accumulation of marine shell deposited by human agents rather than the result of marine activity. The shells are concentrated in a specific locality above the high-water mark and frequently contain stone tools, pottery, bone and occasionally also human remains. Shell middens may be of various sizes and depths, but an accumulation which exceeds 1 m² in extent, should be reported to an archaeologist.

Human Skeletal material

Human remains, whether the complete remains of an individual buried during the past, or scattered human remains resulting from disturbance of the grave, should be reported. In general, the remains are buried in a flexed position on their sides but are also found buried in a sitting position with a flat stone capping and developers are requested to be on the alert for this.

Fossil bone

Fossil bones or any other concentrations of bones, whether fossilized or not, should be reported.

Stone artefacts

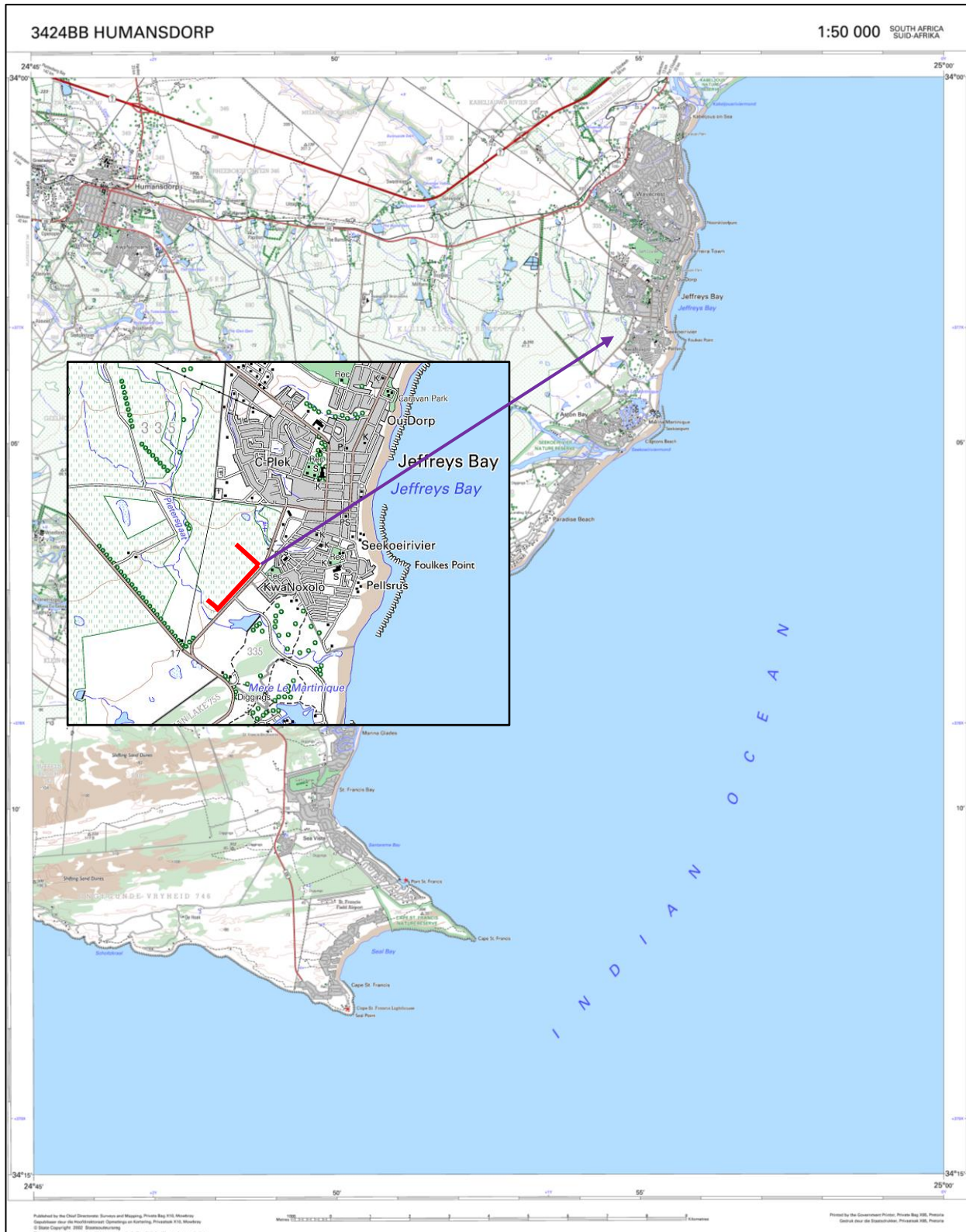
These are difficult for the layman to identify. However, large accumulations of flaked stones which do not appear to have been distributed naturally should be reported. If the stone tools are associated with bone remains, development should be halted immediately, and archaeologists notified.

Stone features and platforms

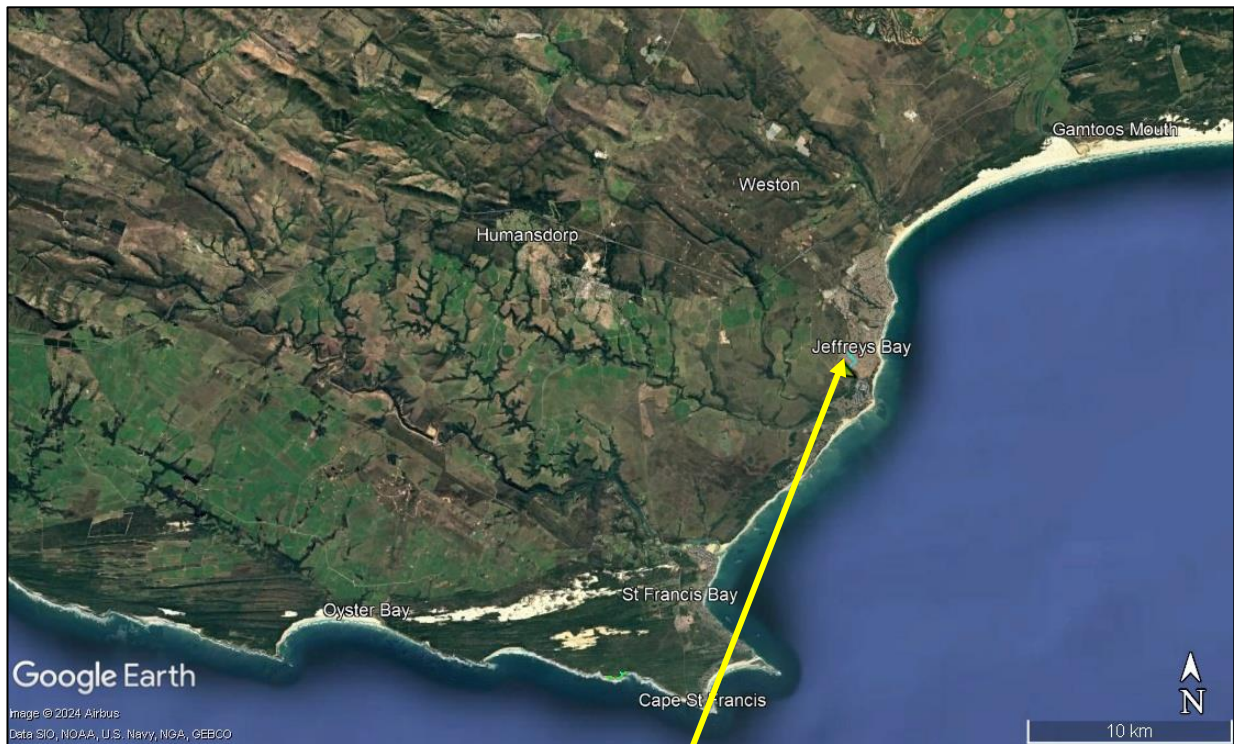
These occur in different forms and sizes, but easily identifiable. The most common are an accumulation of roughly circular fire cracked stones tightly spaced and filled in with charcoal and marine shell. They are usually 1-2 metres in diameter and may represent cooking platforms for shellfish. Others may resemble circular single row cobble stone markers. These occur in different sizes and may be the remains of windbreaks or cooking shelters.

Historical artefacts or features

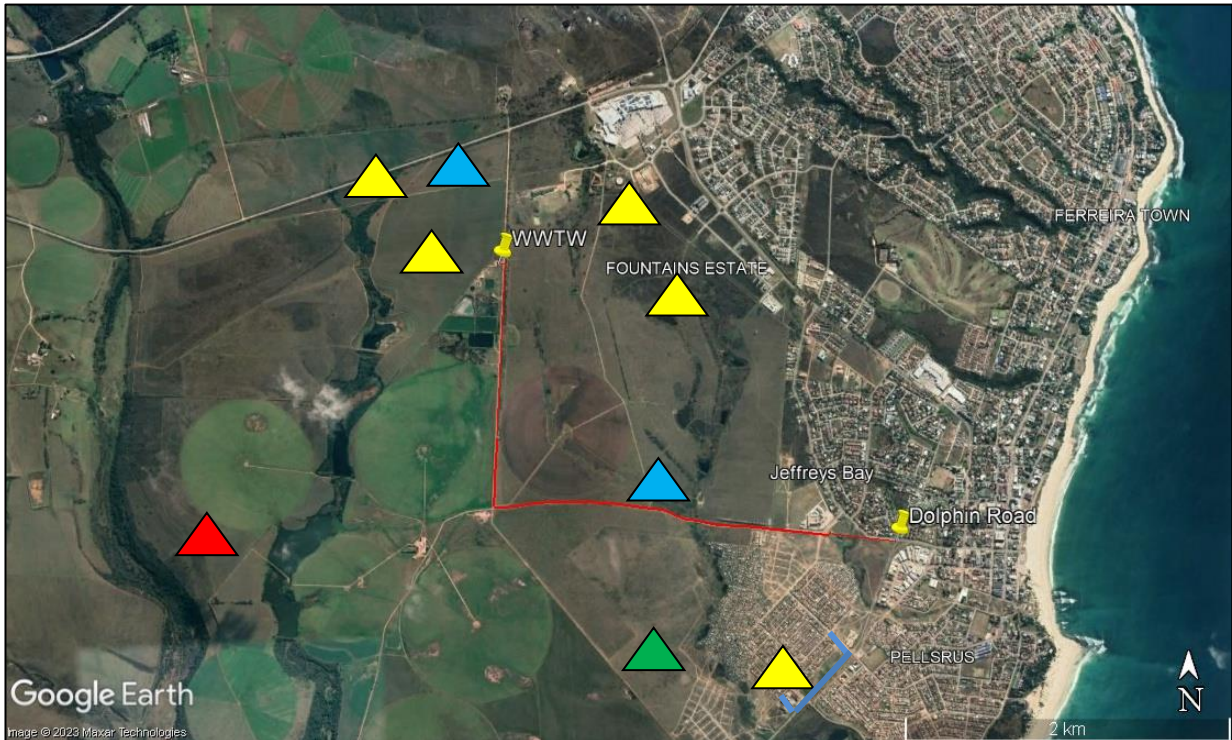
These are easy to identify and include foundations of buildings or other construction features and items from domestic and military activities.



Map 1. 1:50 000 Topographic maps indicating the approximate location of the proposed development area. The approximate pipeline route is indicated in red. The start point in Oceanview Township is indicated with the purple arrow.



Map 2. Aerial views of the general location of the proposed area for the development of the proposed new Oceanview Collector Sewer line on several portions of the Farm Estate Klein Zeekoei Rivier No. 335 and Erf 7907 in Jeffreys Bay, Kouga Local Municipality, Eastern Cape Province. The proposed pipeline route is indicated in light blue and the location of the Oceanview Sewer Pumpstation with the red circle.



Map 3. Aerial view of the general location of the proposed development area. Previous archaeological assessments that were conducted in close proximity to the proposed development area are indicated by the yellow squares (Binneman 2006a; 2006b; 2007; 2008c), the green square (Kruger 2017), the red square (Webley 2006) and Reichert 2023 & 2024 with the blue squares. The pipeline route for the current project is indicated in blue and the red line indicates a pipeline route for the upgrading of the Jeffreys Bay Sewer Rising Main that was assessed in 2023 (ECPHRA Case no: 19642).



Map 4. Aerial view of the proposed development area indicating survey tracks in red.



DETAILS OF SPECIALIST AND DECLARATION OF INTEREST IN TERMS OF REGULATIONS 12 AND 13 OF THE AMENDMENTS TO THE ENVIRONMENTAL IMPACT ASSESSMENT REGULATIONS, 2014 AS AMENDED.

	(For official use only)
File Reference Number:	
NEAS Reference Number:	
Date Received:	

Application for environmental authorization in terms of the National Environmental Management Act, 1998 (Act No. 107 of 1998), as amended and the Amendments to the Environmental Impact Assessment Regulations, 2014. This form is valid as of 6 January 2021.

PROJECT TITLE

PROPOSED OCEAN VIEW COLLECTOR SEWER, KOUGA LOCAL MUNICIPALITY, EASTERN CAPE

SPECIALIST ¹	Eastern Cape Heritage Consultants cc		
Contact person:	Kobus Reichert		
Postal address:	P.O. Box 689, Jeffreys Bay		
Postal code:	6330	Cell:	072 800 6322
Telephone:	N/A	Fax:	N/A
E-mail:	kobusreichert@yahoo.com		
Professional affiliation(s) (if any)	Society for Africanist Archaeologists (SAfA)		

Project Consultant:	CEN Integrated Environmental Management Unit		
Contact person:	Lucille Behrens		
Postal address:	140 Kruger Gardens, Admiralty Way, Summerstrand, Gqeberha		
Postal code:	6001	Cell:	082 922 1645
Telephone:		Fax:	
E-mail:	lucille@environmentcen.co.za		

4.2 The SPECIALIST

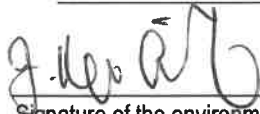
I, Kobus Reichert, declare that –

General declaration:

- I act as the independent Specialist in this application
- I will perform the work relating to the application in an objective manner, even if this results in views and findings that are not favourable to the applicant
- I declare that there are no circumstances that may compromise my objectivity in performing such work;
- I have expertise in conducting environmental impact assessments, including knowledge of the Act, regulations and any guidelines that have relevance to the proposed activity;
- I will comply with the Act, regulations and all other applicable legislation;
- I will take into account, to the extent possible, the matters listed in regulation 8 of the regulations when preparing the application and any report relating to the application;
- I have no, and will not engage in, conflicting interests in the undertaking of the activity;
- I undertake to disclose to the applicant and the competent authority all material information in my possession that reasonably has or may have the potential of influencing - any decision to be taken with respect to the application by the competent authority; and - the objectivity of any report, plan or document to be prepared by myself for submission to the competent authority;
- I will ensure that information containing all relevant facts in respect of the application is distributed or made available to interested and affected parties and the public and that participation by interested and affected parties is facilitated in such a manner that all interested and affected parties will be provided with a reasonable opportunity to participate and to provide comments on documents that are produced to support the application; n/a
- I will ensure that the comments of all interested and affected parties are considered and recorded in reports that are submitted to the competent authority in respect of the application, provided that comments that are made by interested and affected parties in respect of a final report that will be submitted to the competent authority may be attached to the report without further amendment to the report; n/a
- I will keep a register of all interested and affected parties that participated in a public participation process n/a; and
- I will provide the competent authority with access to all information at my disposal regarding the application, whether such information is favourable to the applicant or not
- all the particulars furnished by me in this form are true and correct;
- will perform all other obligations as expected from an environmental assessment practitioner in terms of the Regulations; and
- I realise that a false declaration is an offence and is punishable in terms of section 24F of the Act.

Disclosure of Vested Interest (delete whichever is not applicable)

- I do not have and will not have any vested interest (either business, financial, personal or other) in the proposed activity proceeding other than remuneration for work performed in terms of the Amendments to Environmental Impact Assessment Regulations, 2014 as amended.
- ~~I have a vested interest in the proposed activity proceeding, such vested interest being:~~



Signature of the environmental assessment practitioner:

Eastern Cape Heritage Consultants cc

Name of company:

6 February 2025

Date:

Signature of the Commissioner of Oaths:



Date: 06 February 2025

Designation: OWNER / MANAGER

1 Curriculum Vitae (CV) attached

Official stamp (below).

Cornelia Johanna Delport
COMMISSIONER OF OATHS
Owner / Manager - 9/1/8/2Kouga
Post Zone shop 6, Magna Towers
124 Da Gama road, Jeffreys Bay 6330

Annexure 1

CV

See attached CV

Abbreviated Curriculum Vitae 2024

NAME : Kobus Reichert

DATE OF BIRTH : 16 September 1967

ID NUMBER : 6709165176082

NATIONALITY : South African

AGE : 56

BUSINESS ADDRESS : Eastern Cape Heritage Consultants cc
Reg. no: 2006/088345/23
6 Graceland Villas
Waratah street, Wavecrest
Jeffreys Bay
6330

POSTAL ADDRESS : Same as above

CELLPHONE NO. : 072 800 6322

E-MAIL : kobusreichert@yahoo.com

HOME LANGUAGE : Afrikaans

OTHER LANGUAGES : English

DRIVING LICENCE : CODE EB

EDUCATIONAL QUALIFICATIONS

SCHOOL : Hoër Volksskool - Potchefstroom

STANDARD PASSED : Matric with full exemption - 1985

TERTIARY QUALIFICATIONS

UNIVERSITY : Potchefstroom University (1991)

DEGREE : B. Proc

UNIVERSITY : UNISA (2015)

DEGREE : BA Honours (Archaeology)

PREVIOUS POSITIONS

NAME OF EMPLOYER : Department of Correctional Services

POSITION : Provincial Head: Legal Services (Eastern Cape)
Resigned from the Department in 1998

NAME OF EMPLOYER : Eastern Cape Heritage Consultants cc (Owner)

POSITION : Heritage Consultant
Obtained BA (Honours) degree in Archaeology in 2015.

CURRENT POSITION

OCCUPATION : Archaeologist (2015 to present)
Owner: Eastern Cape Heritage Consultants cc
- Reg no. 2006/088345/23)

EXPERIENCE: Eastern Cape Heritage Consultants cc was established in 2006. Dr. Johan Binneman provided specialist archaeological services to the company and I assisted him with fieldwork and the conducting of Phase 1 Archaeological Impact Assessments (AIA's) from 2006 -2014. After I obtained my Honours degree in Archaeology in 2015, I became the co-author of more than 150 Phase 1 AIA and other archaeological reports until 2021. Since then I have conducted several archaeological assessments in the Eastern Cape in my personal capacity. Dr. Binneman has got 40 years' research experience of the archaeology of the eastern and southern Cape. This includes the fields of Earlier, Middle and Later Stone Age, Iron Age, Rock Art and Historical Archaeology. I have been in the privileged position to have him as a mentor over a period of 16 years and the experience gained during this time equipped me with the necessary skills and knowledge to conduct Phase1 Archaeological Impact Assessments and other archaeological work.

SELECTED PREVIOUS PROJECTS

- : Heritage Impact Assessment for the Baviaanskloof Mega Reserve: 2006
- : Phase 1 AIA: Kouga Development Agency Project, Jeffreys Bay, Kouga Municipality: 2007
- : Phase 1 AIA: Sarah Baartman Project, Hankey: 2008
- : Heritage Impact Assessment for the Coega Industrial Development Zone: 2010
- : Phase 1 AIA: Oyster Bay Wind Energy Facility: 2011
- : Phase 1 AIA: Deep River Wind Energy Facility, Kouga Municipality: 2011
- : Phase 1 AIA: Jeffreys Bay Wind Farm , Kouga Municipality: 2012
- : Phase 1 AIA: Cookhouse South Wind Farm, Blue Crane Route Municipality: 2013
- : Archaeological Walkthrough: Msenge Emoyeni Wind Energy Facility, Bedford: 2014
- : Archaeological Walkthrough: 132 kV power line from the Melkhout to Diep Rivier substations, Kouga Municipality: 2015
- : Phase 1 AIA: 132 kV power line for the Golden Valley Wind Farm near Cookhouse, Blue Crane Route Municipality: 2016
- : Archaeological desktop study: Impofu Wind Energy Facility, Kouga Municipality: 2017
- : Archaeological Walkthrough: Expansion of agricultural activities on the Farm Langebos, Sundays River Valley Municipality: 2018
- : Archaeological inspection: Access roads and test pits for the aquaculture and gas to power project in Zone 10 of the Coega Development Corporation (CDC), Nelson Mandela Bay Municipality: 2019
- : Archaeological monitoring: vegetation clearing and construction activities for the APLI project in Zone 1 of the CDC, Nelson Mandela Bay Municipality: 2020
- : Phase 1 AIA: Infrastructure development and upgrades within the Great Fish River Nature Reserve, Makana, Raymond Mhlaba and Ngqushwa Municipalities: 2021
- : Phase 1 AIA: Construction of the new 132 kV transmission line from Wolf-Skilpad-Grassridge Substations, Kariega / Kirkwood: 2022
- : Phase 1 AIA: Dubula Solar PV Facility and associated infrastructure between Kariega and Motherwell, Nelson Mandela Bay Municipality: 2023

: Archaeological Walkthrough: Skilpad-Grassridge Substations - 132 kV transmission line, Sundays River Valley Municipality and Nelson Mandela Bay Municipality: 2024

AWARDS:

The Eastern Cape Premier's Award for Heritage Conservation (2007)

The Eastern Cape MEC for Sport, Recreation, Arts & Culture's Award for Museum and Heritage (2016)

MEMBERSHIP OF PROFESSIONAL BODIES:

Society of Africanist Archaeologists (SAfA) - 2012 to present.

INTERNATIONAL CONFERENCES ATTENDED:

2008 Association of South African Professional Archaeologists (ASAPA), 25 - 29 March, Cape Town.

2012 Society of Africanist Archaeologists (SAfA), 25 - 29 June, University of Toronto, Canada (co-author of a paper presented by Dr. Binneman)

CONSULTANT PROJECTS - Clients include:

Wilderness Foundation

Coega Development Corporation

Eskom

CSIR

Eastern Cape Parks & Tourism Agency (ECPTA)

WBHO

Wind Energy Developers in the Eastern Cape