

**SCREENING REPORT FOR AN ENVIRONMENTAL AUTHORIZATION AS  
REQUIRED BY THE 2014 EIA REGULATIONS – PROPOSED SITE  
ENVIRONMENTAL SENSITIVITY**

**EIA Reference number:**

**Project name:** Newfields Saldanha Bulk Ore Storage and Handling Facility

**Project title:** Newfields Saldanha Bulk Ore Storage and Handling Facility

**Date screening report generated:** 05/08/2025 10:42:44

**Applicant:** Newfields Investments - K.Govender

**Compiler:** L. Behrens - CEN IEM Unit

**Compiler signature:**  
.....

**Application Category:** Activity requiring permit or licence in terms of National or Provincial legislation governing the release or generation of emissions | Emissions

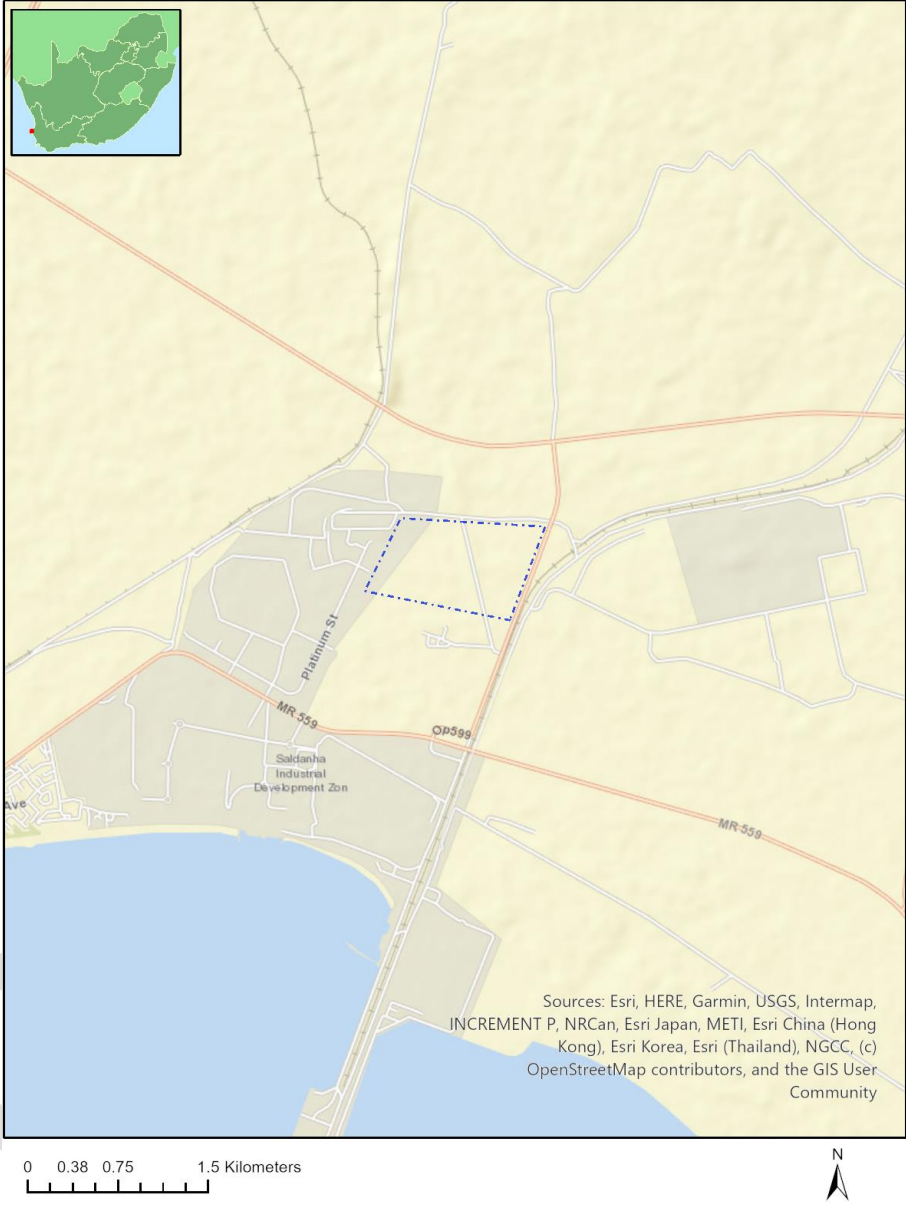
# Table of Contents

- Proposed Project Location ..... 3
  - Orientation map 1: General location ..... 3
- Map of proposed site and relevant area(s) ..... 4
  - Cadastral details of the proposed site ..... 4
  - Wind and Solar developments with an approved Environmental Authorisation or applications under consideration within 30 km of the proposed area ..... 4
  - Environmental Management Frameworks relevant to the application ..... 5
- Environmental screening results and assessment outcomes ..... 5
  - Relevant development incentives, restrictions, exclusions or prohibitions ..... 5
  - Proposed Development Area Environmental Sensitivity ..... 6
  - Specialist assessments identified ..... 6
- Results of the environmental sensitivity of the proposed area ..... 8
  - MAP OF RELATIVE AGRICULTURE THEME SENSITIVITY ..... 8
  - MAP OF RELATIVE ANIMAL SPECIES THEME SENSITIVITY ..... 9
  - MAP OF RELATIVE AQUATIC BIODIVERSITY THEME SENSITIVITY ..... 10
  - MAP OF RELATIVE ARCHAEOLOGICAL AND CULTURAL HERITAGE THEME SENSITIVITY ..... 11
  - MAP OF RELATIVE CIVIL AVIATION THEME SENSITIVITY ..... 12
  - MAP OF RELATIVE DEFENCE THEME SENSITIVITY ..... 13
  - MAP OF RELATIVE PALEONTOLOGY THEME SENSITIVITY ..... 14
  - MAP OF RELATIVE PLANT SPECIES THEME SENSITIVITY ..... 15
  - MAP OF RELATIVE TERRESTRIAL BIODIVERSITY THEME SENSITIVITY ..... 17

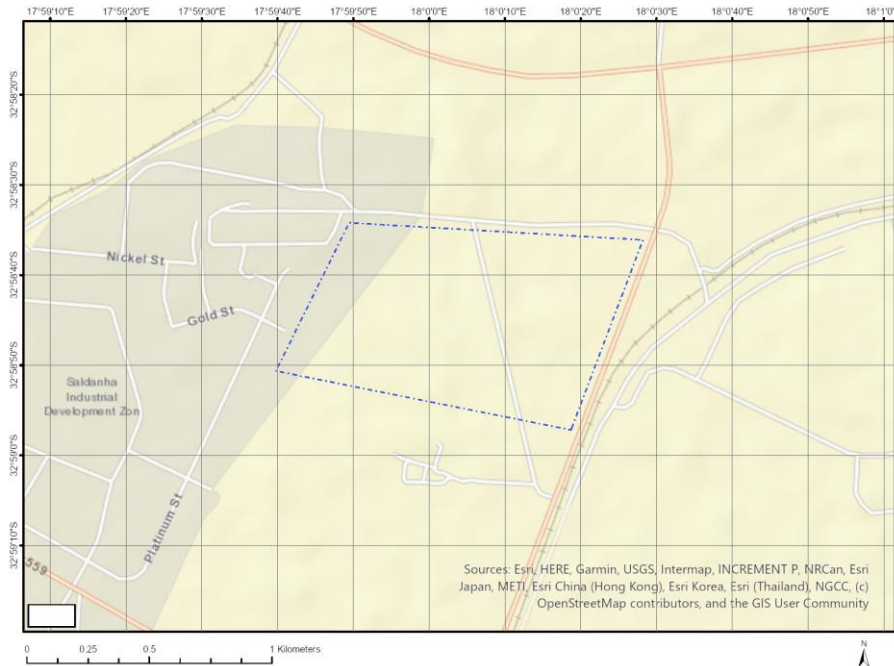
# Proposed Project Location

## Orientation map 1: General location

**General Orientation: Newfields Saldanha Bulk Ore Storage and Handling Facility**



## Map of proposed site and relevant area(s)



## Cadastral details of the proposed site

Property details:

No	Farm Name	Farm/ Erf No	Portion	Latitude	Longitude	Property Type
1		1139	0	32°59'1.59S	17°59'56.16E	Farm
2		1139	0	32°58'59.12S	17°59'56.64E	Farm Portion

Development footprint<sup>1</sup> vertices:

No development footprint(s) specified.

## Wind and Solar developments with an approved Environmental Authorisation or applications under consideration within 30 km of the proposed area

No	EIA Reference No	Classification	Status of application	Distance from proposed area (km)
1	12/12/20/1581/A3	Wind	Approved	15.2
2	14/12/16/3/3/2/2540	Solar PV	Approved	18.7
3	14/12/16/3/3/1/2348	Solar PV	Approved	22.5
4	14/12/16/3/3/2/1057	Wind	Approved	17.1

<sup>1</sup> "development footprint", means the area within the site on which the development will take place and includes all ancillary developments for example roads, power lines, boundary walls, paving etc. which require vegetation clearance or which will be disturbed and for which the application has been submitted.

5	14/12/16/3/3/2/2053	Solar PV	Approved	16.6
6	12/12/20/2126/AM6	Solar PV	Approved	8.3
7	14/12/16/3/3/2/2436	Solar PV	Approved	28.7
8	12/12/20/2126/1/AM2	Solar PV	Approved	8.3
9	12/12/20/2126/AM7	Solar PV	Approved	8.3
10	12/12/20/2126/1	Solar PV	Approved	8.3
11	12/12/20/1781/AM3	Wind	Approved	13.6
12	12/12/20/2157	Wind	Approved	18.5
13	14/12/16/3/3/2/2503	Solar PV	Approved	19.5
14	14/12/16/3/3/2/1144	Solar PV	Approved	28.7
15	14/12/16/3/3/2/1031	Solar PV	Approved	10.2
16	12/12/20/2126	Solar PV	Approved	4.7
17	12/12/20/1581	Wind	Approved	15.2
18	12/12/20/1781/AM2	Wind	Approved	13.6
19	12/12/20/2626	Solar PV	Approved	5.6
20	12/12/20/1781/A1	Wind	Approved	13.6
21	12/12/20/2339	Wind	Approved	0.2
22	14/12/16/3/3/1/2108	Wind	Approved	16.4
23	12/12/20/2126/AM5	Solar PV	Approved	8.3
24	14/12/16/3/3/2/2020	Solar PV	Approved	4.7
25	12/12/20/1781	Wind	Approved	13.6
26	12/12/20/2126/1/AM5	Solar PV	Approved	8.3
27	12/12/20/2126/AM2	Solar PV	Approved	8.3
28	12/12/20/2625	Solar PV	Approved	3.9

## Environmental Management Frameworks relevant to the application

No intersections with EMF areas found.

## Environmental screening results and assessment outcomes

The following sections contain a summary of any development incentives, restrictions, exclusions or prohibitions that apply to the proposed development site as well as the most environmental sensitive features on the site based on the site sensitivity screening results for the application classification that was selected. The application classification selected for this report is:

**Activity requiring permit or licence in terms of National or Provincial legislation governing the release or generation of emissions| Emissions.**

### Relevant development incentives, restrictions, exclusions or prohibitions

The following development incentives, restrictions, exclusions or prohibitions and their implications that apply to this site are indicated below.

Incentive, restriction or prohibition	Implication
Strategic Transmission Corridor-Western corridor	<a href="https://screening.environment.gov.za/ScreeningDownloads/DevelopmentZones/Combined_EGI.pdf">https://screening.environment.gov.za/ScreeningDownloads/DevelopmentZones/Combined_EGI.pdf</a>
Besaansklip Industrial Zone-Offset Needed	<a href="https://screening.environment.gov.za/ScreeningDownloads/DevelopmentZones/The_Saldanha_Strategic_Offset_Strategy_2020.pdf">https://screening.environment.gov.za/ScreeningDownloads/DevelopmentZones/The_Saldanha_Strategic_Offset_Strategy_2020.pdf</a>
Besaansklip Industrial Zone-No Offset Needed	<a href="https://screening.environment.gov.za/ScreeningDownloads/DevelopmentZones/The_Saldanha_Strategic_Offset_Strategy_2020.pdf">https://screening.environment.gov.za/ScreeningDownloads/DevelopmentZones/The_Saldanha_Strategic_Offset_Strategy_2020.pdf</a>

Main Electricity Distribution Substation	<a href="https://screening.environment.gov.za/ScreeningDownloads/DevelopmentZones/Distribution_Transmission.pdf">https://screening.environment.gov.za/ScreeningDownloads/DevelopmentZones/Distribution_Transmission.pdf</a>
South African Conservation Areas	<a href="https://screening.environment.gov.za/ScreeningDownloads/DevelopmentZones/SACAD_OR_2025_Q1_Metadata.pdf">https://screening.environment.gov.za/ScreeningDownloads/DevelopmentZones/SACAD_OR_2025_Q1_Metadata.pdf</a>

### Proposed Development Area Environmental Sensitivity

The following summary of the development site environmental sensitivities is identified. Only the highest environmental sensitivity is indicated. The footprint environmental sensitivities for the proposed development footprint as identified, are indicative only and must be verified on site by a suitably qualified person before the specialist assessments identified below can be confirmed.

Theme	Very High sensitivity	High sensitivity	Medium sensitivity	Low sensitivity
Agriculture Theme			X	
Animal Species Theme		X		
Aquatic Biodiversity Theme				X
Archaeological and Cultural Heritage Theme	X			
Civil Aviation Theme		X		
Defence Theme			X	
Paleontology Theme	X			
Plant Species Theme			X	
Terrestrial Biodiversity Theme	X			

### Specialist assessments identified

Based on the selected classification, and the known impacts associated with the proposed development, the following list of specialist assessments have been identified for inclusion in the assessment report. It is the responsibility of the EAP to confirm this list and to motivate in the assessment report, the reason for not including any of the identified specialist study including the provision of photographic evidence of the site situation.

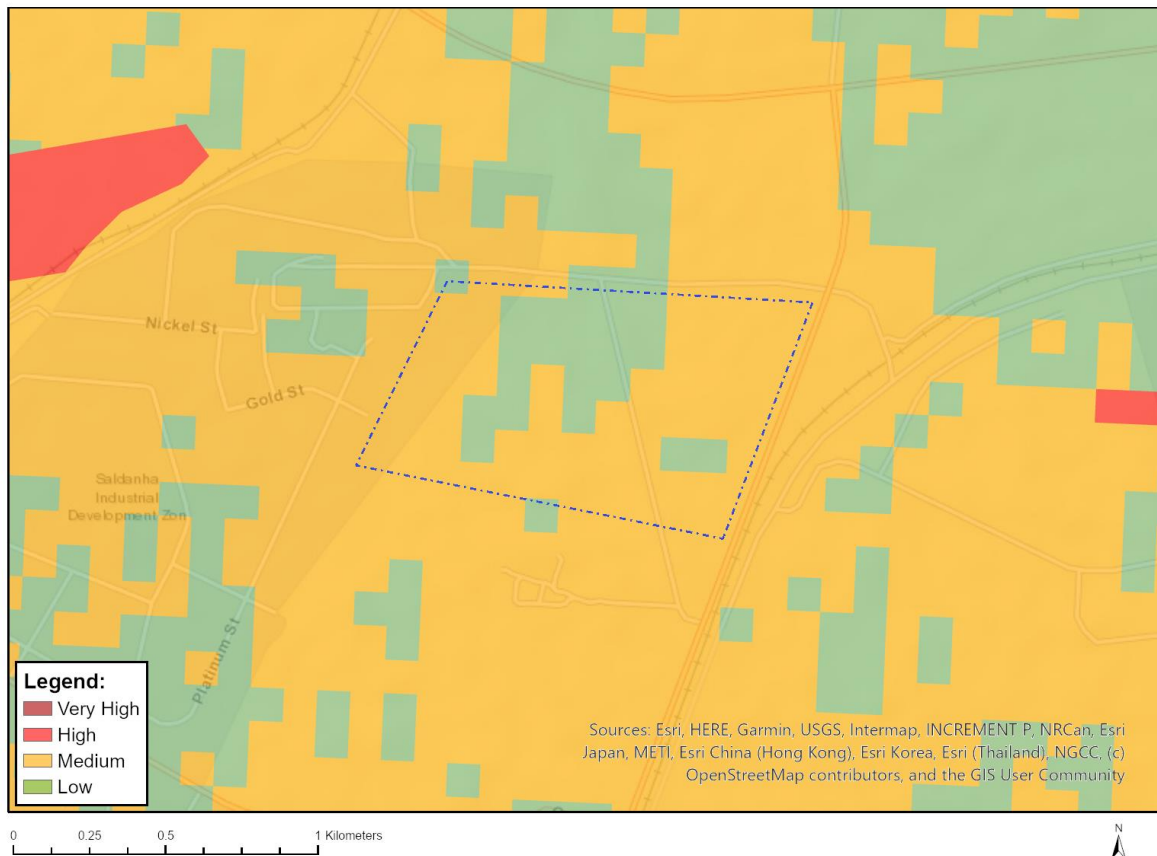
No	Specialist assessment	Assessment Protocol
1	Agricultural Impact Assessment	<a href="https://screening.environment.gov.za/ScreeningDownloads/AssessmentProtocols/Gazetted_General_Agriculture_Assessment_Protocols.pdf">https://screening.environment.gov.za/ScreeningDownloads/AssessmentProtocols/Gazetted_General_Agriculture_Assessment_Protocols.pdf</a>
2	Landscape/Visual Impact Assessment	<a href="https://screening.environment.gov.za/ScreeningDownloads/AssessmentProtocols/Gazetted_General_Requirement_Assessment_Protocols.pdf">https://screening.environment.gov.za/ScreeningDownloads/AssessmentProtocols/Gazetted_General_Requirement_Assessment_Protocols.pdf</a>
3	Archaeological and Cultural Heritage Impact Assessment	<a href="https://screening.environment.gov.za/ScreeningDownloads/AssessmentProtocols/GuidanceforHIA.pdf">https://screening.environment.gov.za/ScreeningDownloads/AssessmentProtocols/GuidanceforHIA.pdf</a>
4	Palaeontology Impact Assessment	<a href="https://screening.environment.gov.za/ScreeningDownloads/AssessmentProtocols/GuidanceforPIA.pdf">https://screening.environment.gov.za/ScreeningDownloads/AssessmentProtocols/GuidanceforPIA.pdf</a>
5	Terrestrial Biodiversity Impact Assessment	<a href="https://screening.environment.gov.za/ScreeningDownloads/AssessmentProtocols/Gazetted_Terrestrial_Biodiversity_Assessment_Protocols.pdf">https://screening.environment.gov.za/ScreeningDownloads/AssessmentProtocols/Gazetted_Terrestrial_Biodiversity_Assessment_Protocols.pdf</a>
6	Aquatic Biodiversity Impact Assessment	<a href="https://screening.environment.gov.za/ScreeningDownloads/AssessmentProtocols/Gazetted_Aquatic_Biodiversity_Assessment_Protocols.pdf">https://screening.environment.gov.za/ScreeningDownloads/AssessmentProtocols/Gazetted_Aquatic_Biodiversity_Assessment_Protocols.pdf</a>

		<a href="#">otocols.pdf</a>
7	Hydrology Assessment	<a href="https://screening.environment.gov.za/ScreeningDownloads/AssessmentProtocols/Gazetted_General_Requirement_Assessment_Protocols.pdf">https://screening.environment.gov.za/ScreeningDownloads/AssessmentProtocols/Gazetted_General_Requirement_Assessment_Protocols.pdf</a>
8	Noise Impact Assessment	<a href="https://screening.environment.gov.za/ScreeningDownloads/AssessmentProtocols/Gazetted_Noise_Impacts_Assessment_Protocol.pdf">https://screening.environment.gov.za/ScreeningDownloads/AssessmentProtocols/Gazetted_Noise_Impacts_Assessment_Protocol.pdf</a>
9	Traffic Impact Assessment	<a href="https://screening.environment.gov.za/ScreeningDownloads/AssessmentProtocols/Gazetted_General_Requirement_Assessment_Protocols.pdf">https://screening.environment.gov.za/ScreeningDownloads/AssessmentProtocols/Gazetted_General_Requirement_Assessment_Protocols.pdf</a>
10	Health Impact Assessment	<a href="https://screening.environment.gov.za/ScreeningDownloads/AssessmentProtocols/Gazetted_General_Requirement_Assessment_Protocols.pdf">https://screening.environment.gov.za/ScreeningDownloads/AssessmentProtocols/Gazetted_General_Requirement_Assessment_Protocols.pdf</a>
11	Socio-Economic Assessment	<a href="https://screening.environment.gov.za/ScreeningDownloads/AssessmentProtocols/Gazetted_General_Requirement_Assessment_Protocols.pdf">https://screening.environment.gov.za/ScreeningDownloads/AssessmentProtocols/Gazetted_General_Requirement_Assessment_Protocols.pdf</a>
12	Ambient Air Quality Impact Assessment	<a href="https://screening.environment.gov.za/ScreeningDownloads/AssessmentProtocols/Gazetted_General_Requirement_Assessment_Protocols.pdf">https://screening.environment.gov.za/ScreeningDownloads/AssessmentProtocols/Gazetted_General_Requirement_Assessment_Protocols.pdf</a>
13	Air Quality Impact Assessment	<a href="https://screening.environment.gov.za/ScreeningDownloads/AssessmentProtocols/Gazetted_General_Requirement_Assessment_Protocols.pdf">https://screening.environment.gov.za/ScreeningDownloads/AssessmentProtocols/Gazetted_General_Requirement_Assessment_Protocols.pdf</a>
14	Plant Species Assessment	<a href="https://screening.environment.gov.za/ScreeningDownloads/AssessmentProtocols/Gazetted_Plant_Species_Assessment_Protocols.pdf">https://screening.environment.gov.za/ScreeningDownloads/AssessmentProtocols/Gazetted_Plant_Species_Assessment_Protocols.pdf</a>
15	Animal Species Assessment	<a href="https://screening.environment.gov.za/ScreeningDownloads/AssessmentProtocols/Gazetted_Animal_Species_Assessment_Protocols.pdf">https://screening.environment.gov.za/ScreeningDownloads/AssessmentProtocols/Gazetted_Animal_Species_Assessment_Protocols.pdf</a>

## Results of the environmental sensitivity of the proposed area.

The following section represents the results of the screening for environmental sensitivity of the proposed site for relevant environmental themes associated with the project classification. It is the duty of the EAP to ensure that the environmental themes provided by the screening tool are comprehensive and complete for the project. Refer to the disclaimer.

### MAP OF RELATIVE AGRICULTURE THEME SENSITIVITY

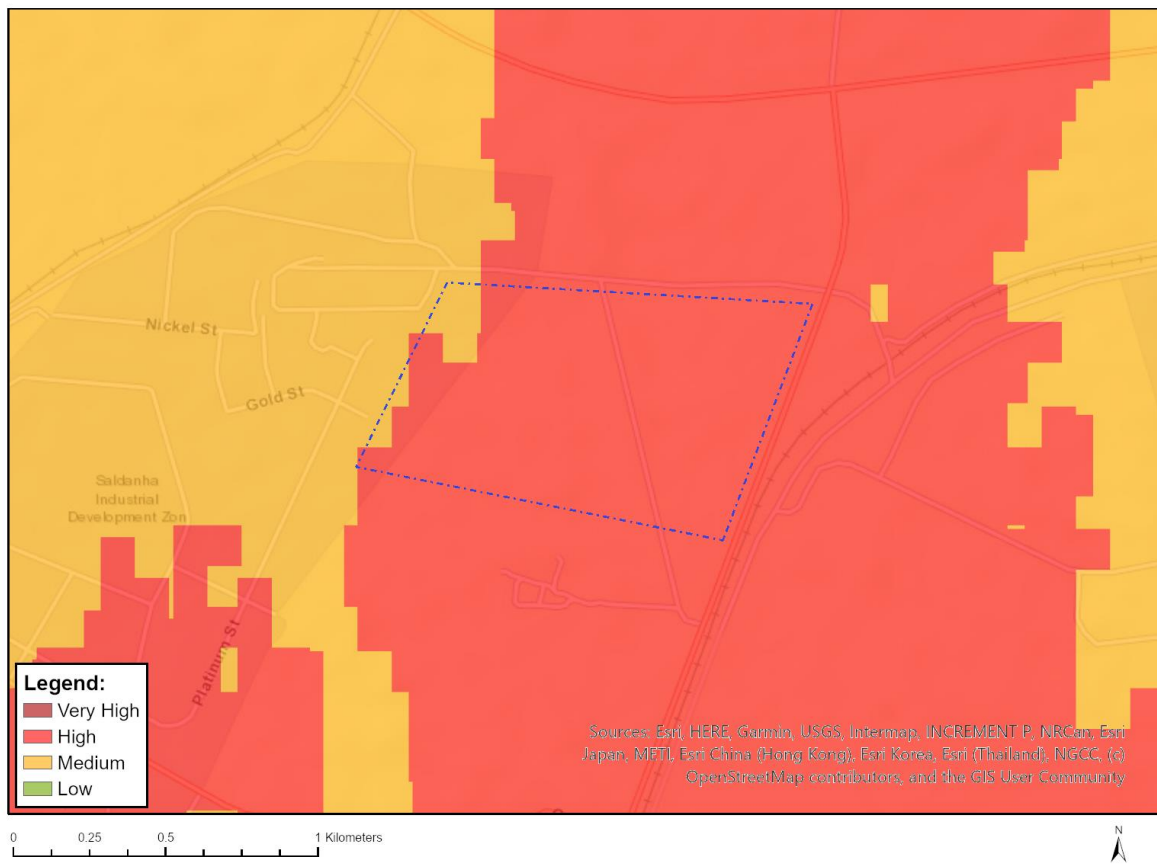


Very High sensitivity	High sensitivity	Medium sensitivity	Low sensitivity
		X	

#### Sensitivity Features:

Sensitivity	Feature(s)
Low	05. Low
Medium	06. Low-Moderate

## MAP OF RELATIVE ANIMAL SPECIES THEME SENSITIVITY



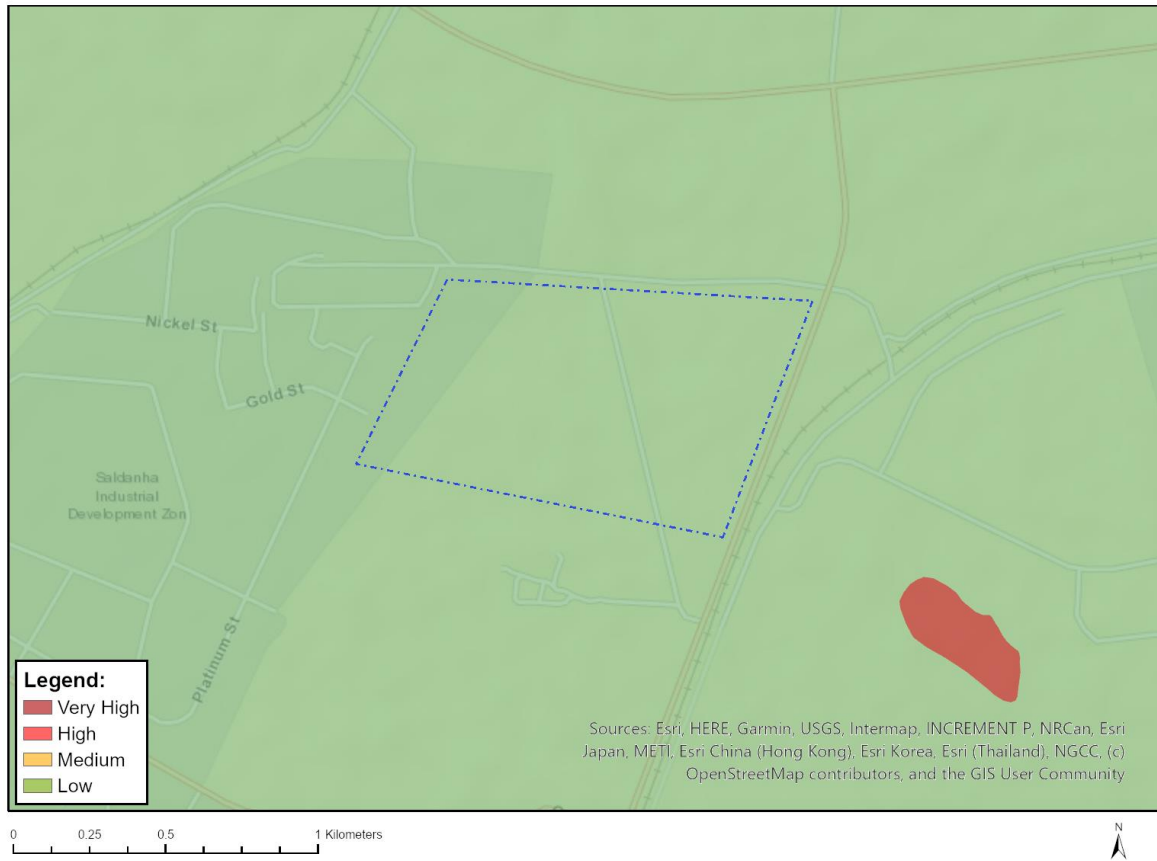
Where only a sensitive plant unique number or sensitive animal unique number is provided in the screening report and an assessment is required, the environmental assessment practitioner (EAP) or specialist is required to email SANBI at [eiadatarequests@sanbi.org.za](mailto:eiadatarequests@sanbi.org.za) listing all sensitive species with their unique identifiers for which information is required. The name has been withheld as the species may be prone to illegal harvesting and must be protected. SANBI will release the actual species name after the details of the EAP or specialist have been documented.

Very High sensitivity	High sensitivity	Medium sensitivity	Low sensitivity
	X		

### Sensitivity Features:

Sensitivity	Feature(s)
High	Aves-Circus ranivorus
High	Aves-Falco biarmicus
High	Aves-Polemaetus bellicosus
High	Aves-Sagittarius serpentarius
High	Aves-Circus maurus
High	Aves-Afrotis afra
Medium	Aves-Circus ranivorus
Medium	Invertebrate-Bullacris obliqua

## MAP OF RELATIVE AQUATIC BIODIVERSITY THEME SENSITIVITY

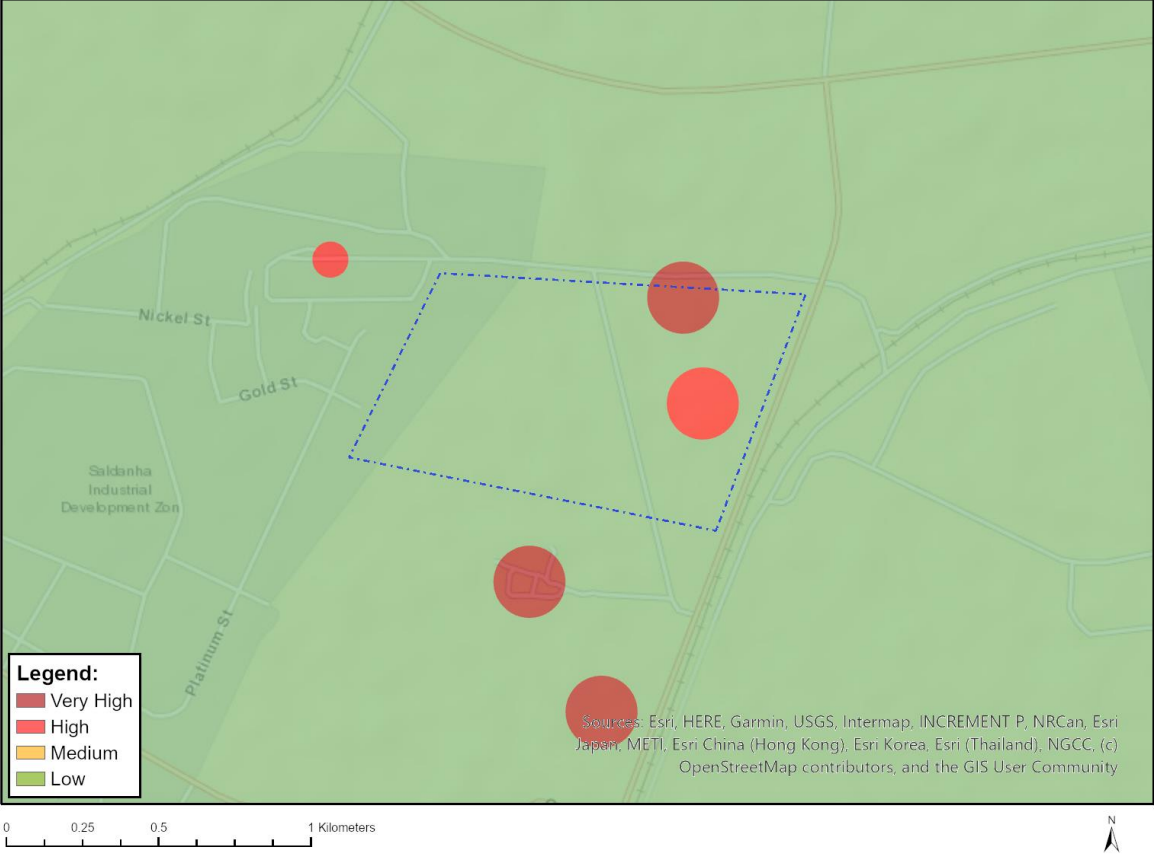


Very High sensitivity	High sensitivity	Medium sensitivity	Low sensitivity
			X

### Sensitivity Features:

Sensitivity	Feature(s)
Low	Low Sensitivity

# MAP OF RELATIVE ARCHAEOLOGICAL AND CULTURAL HERITAGE THEME SENSITIVITY

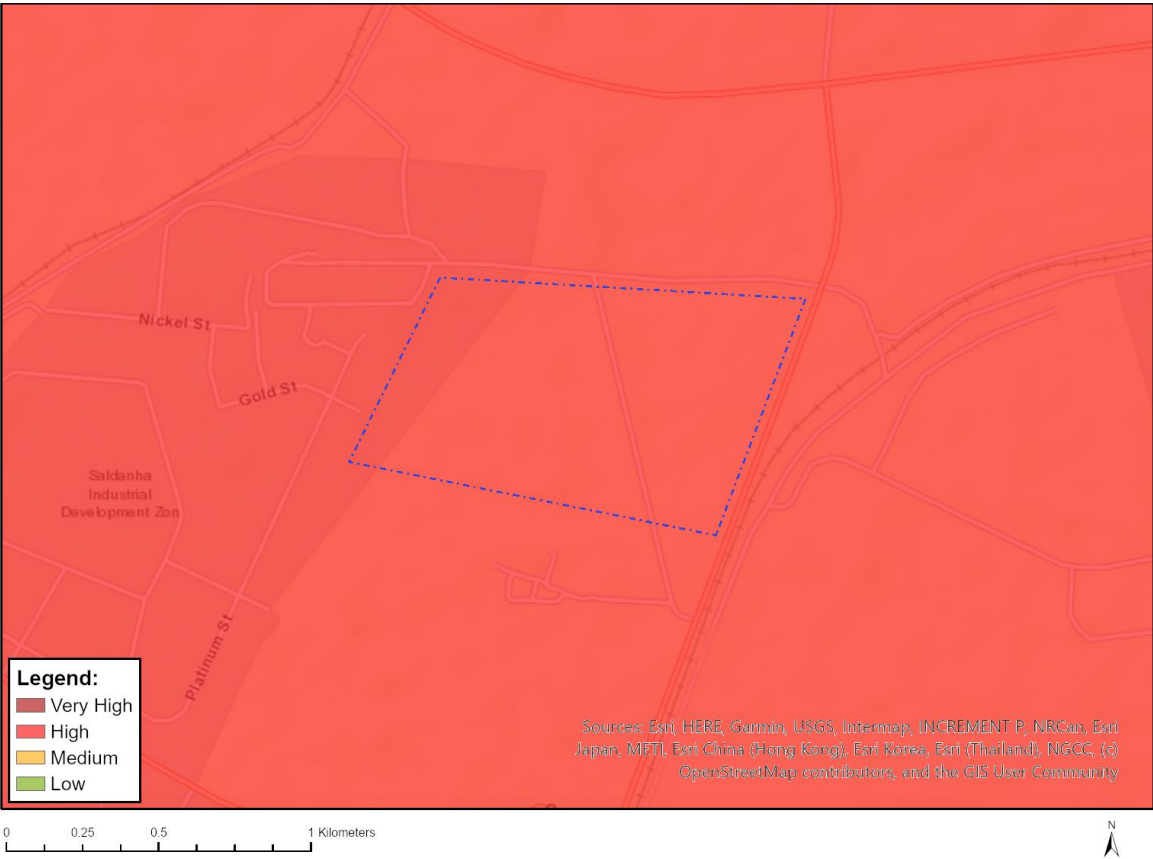


Very High sensitivity	High sensitivity	Medium sensitivity	Low sensitivity
X			

**Sensitivity Features:**

Sensitivity	Feature(s)
High	Within 100m of a Grade IIIb Heritage site
Low	Low Sensitivity
Very High	Within 100m of an Ungraded Heritage site

MAP OF RELATIVE CIVIL AVIATION THEME SENSITIVITY

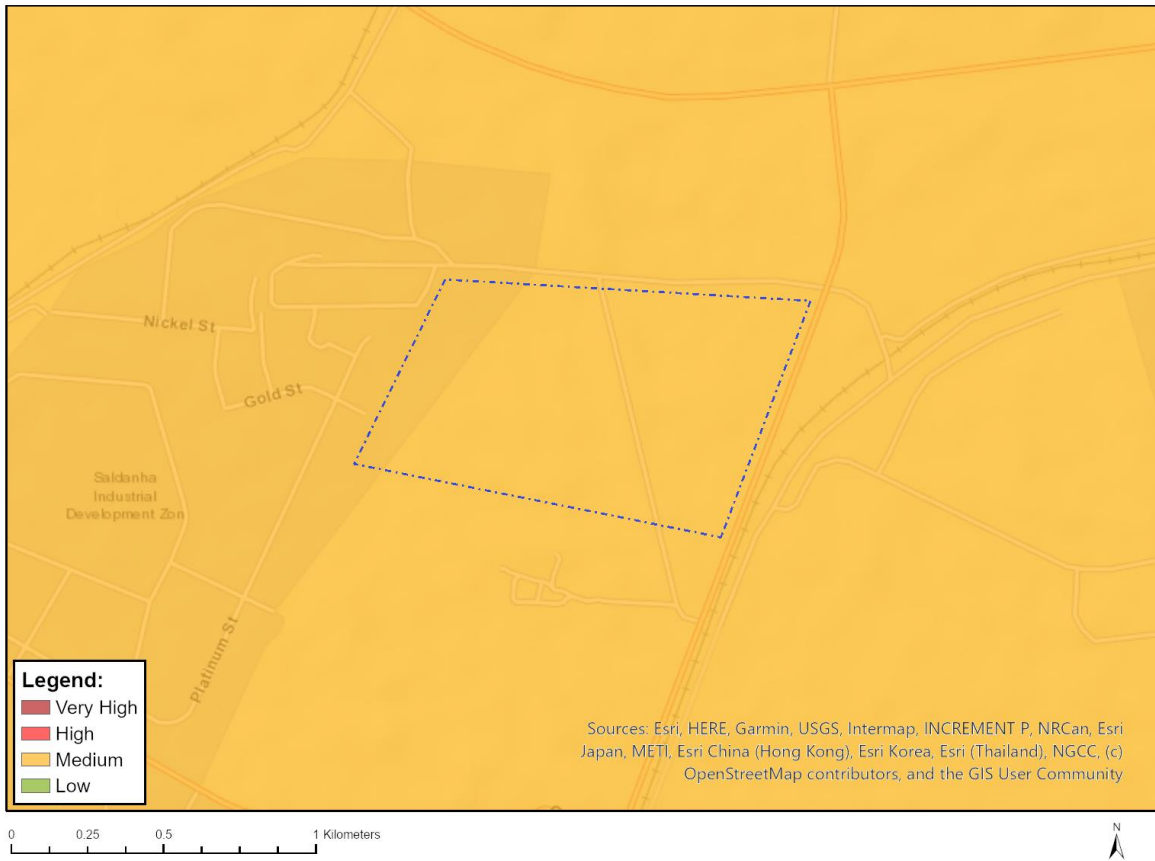


Very High sensitivity	High sensitivity	Medium sensitivity	Low sensitivity
	X		

Sensitivity Features:

Sensitivity	Feature(s)
High	Within 8 km of other civil aviation aerodrome
High	Dangerous and restricted airspace as demarcated

## MAP OF RELATIVE DEFENCE THEME SENSITIVITY

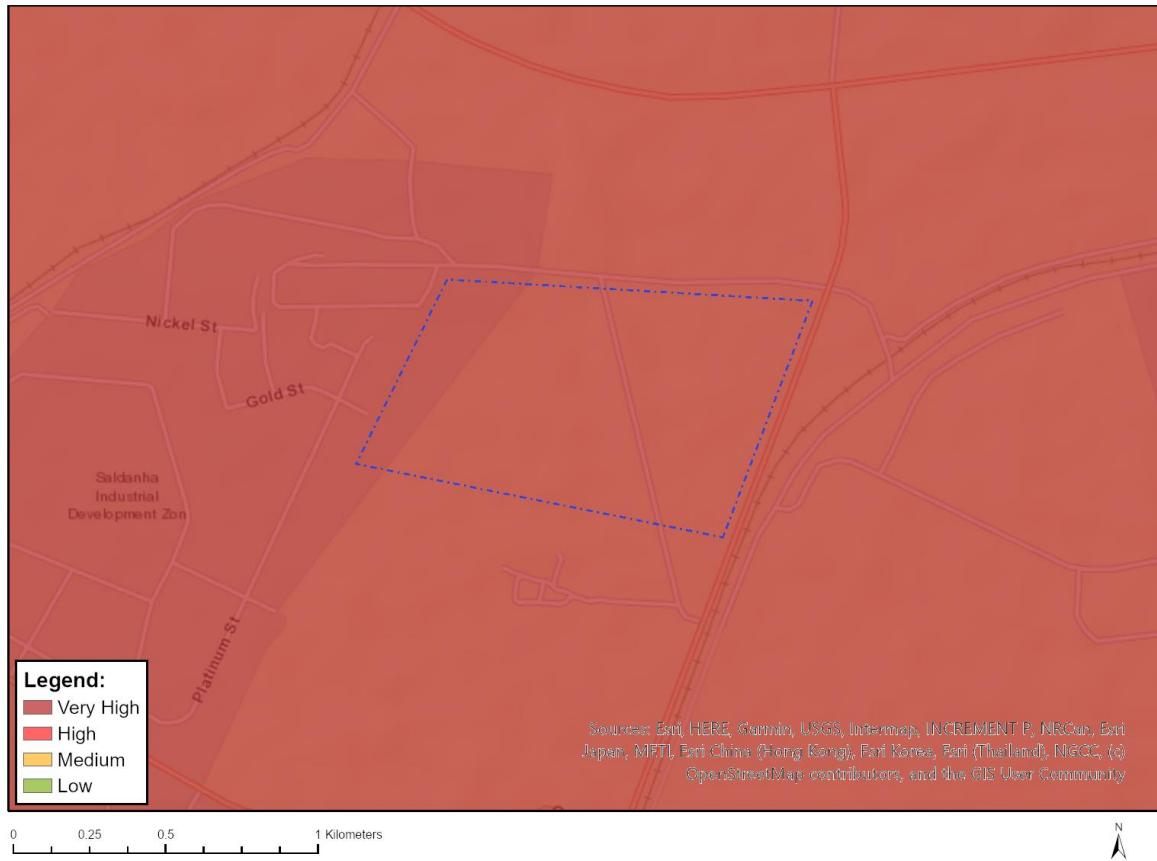


Very High sensitivity	High sensitivity	Medium sensitivity	Low sensitivity
		X	

### Sensitivity Features:

Sensitivity	Feature(s)
Medium	Military and Defence Site

## MAP OF RELATIVE PALEONTOLOGY THEME SENSITIVITY

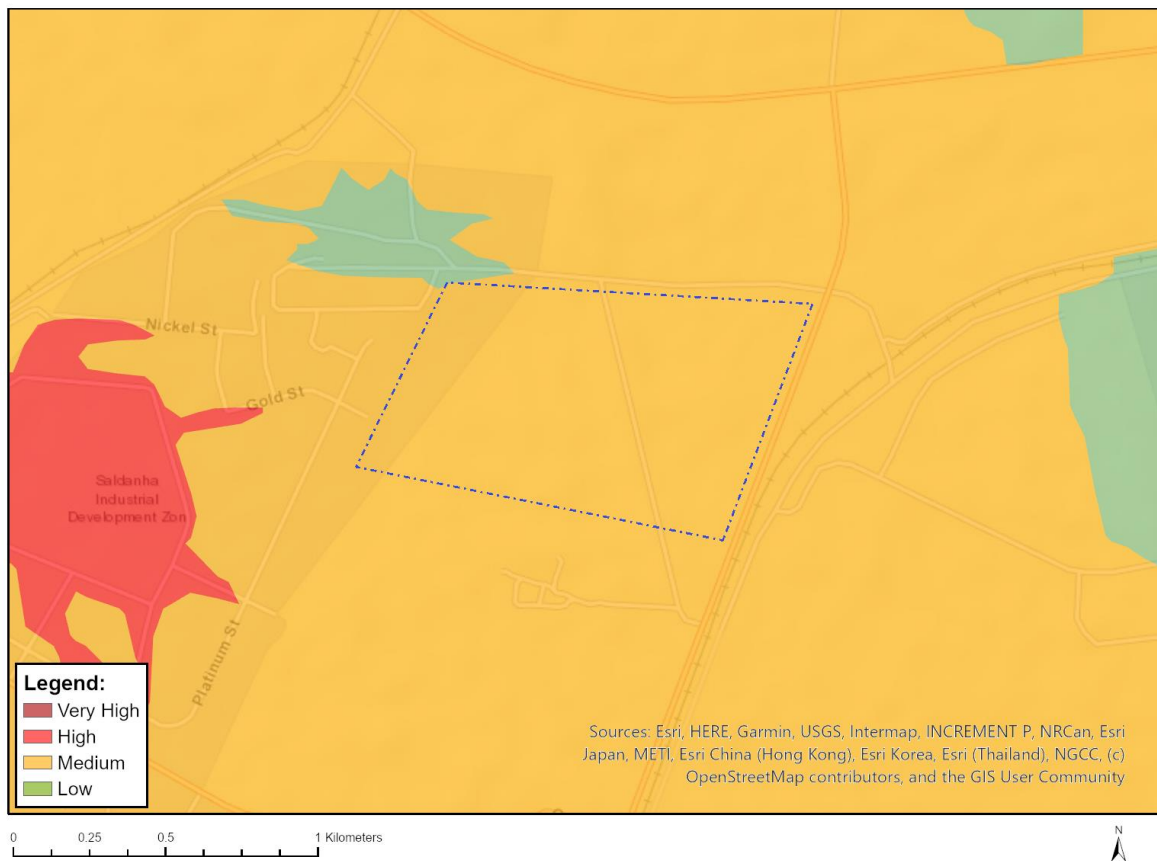


Very High sensitivity	High sensitivity	Medium sensitivity	Low sensitivity
X			

### Sensitivity Features:

Sensitivity	Feature(s)
Very High	Features with a Very High paleontological sensitivity

## MAP OF RELATIVE PLANT SPECIES THEME SENSITIVITY



Where only a sensitive plant unique number or sensitive animal unique number is provided in the screening report and an assessment is required, the environmental assessment practitioner (EAP) or specialist is required to email SANBI at [eiadatarequests@sanbi.org.za](mailto:eiadatarequests@sanbi.org.za) listing all sensitive species with their unique identifiers for which information is required. The name has been withheld as the species may be prone to illegal harvesting and must be protected. SANBI will release the actual species name after the details of the EAP or specialist have been documented.

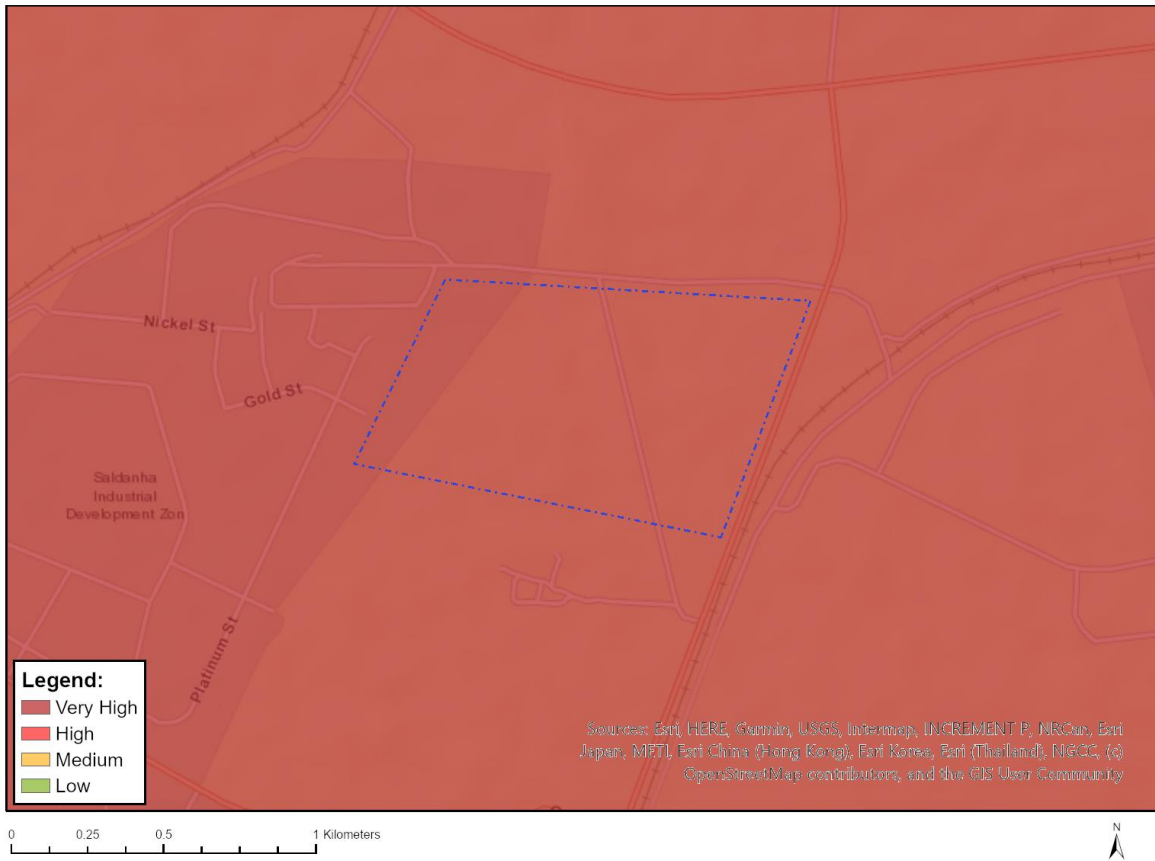
Very High sensitivity	High sensitivity	Medium sensitivity	Low sensitivity
		X	

### Sensitivity Features:

Sensitivity	Feature(s)
Low	Low Sensitivity
Medium	Sensitive species 244
Medium	<i>Antimima limbata</i>
Medium	<i>Ruschia langebaanensis</i>
Medium	<i>Ruschia tecta</i>
Medium	<i>Drosanthemum hispifolium</i>
Medium	<i>Cephalophyllum rostellum</i>
Medium	<i>Indigofera platypoda</i>
Medium	<i>Otholobium venustum</i>
Medium	<i>Wiborgia fusca</i> subsp. <i>macrocarpa</i>
Medium	<i>Leucadendron cinereum</i>
Medium	<i>Leucospermum hypophyllocarpodendron</i> subsp. <i>canaliculatum</i>
Medium	<i>Manulea augei</i>

Medium	<i>Manulea corymbosa</i>
Medium	<i>Echiostachys spicatus</i>
Medium	Sensitive species 878
Medium	<i>Geissorhiza lewisiae</i>
Medium	<i>Sparaxis calcicola</i>
Medium	<i>Ixia purpureorosea</i>
Medium	Sensitive species 881
Medium	Sensitive species 816
Medium	<i>Romulea barkerae</i>
Medium	Sensitive species 127
Medium	Sensitive species 272
Medium	<i>Ferraria densepunctulata</i>
Medium	<i>Ferraria parva</i>
Medium	<i>Pauridia longituba</i>
Medium	<i>Pauridia linearis</i>
Medium	<i>Empodium veratrifolium</i>
Medium	<i>Oxalis burtoniae</i>
Medium	<i>Oxalis subsessilis</i>
Medium	Sensitive species 222
Medium	Sensitive species 93
Medium	<i>Galenia crystallina</i> var. <i>maritima</i>
Medium	<i>Hessea mathewsii</i>
Medium	Sensitive species 840
Medium	<i>Annesorhiza calcicola</i>
Medium	Sensitive species 1243
Medium	<i>Cynanchum zeyheri</i>
Medium	<i>Felicia elongata</i>
Medium	<i>Steirodiscus tagetes</i>
Medium	<i>Cotula duckittiae</i>
Medium	<i>Cotula eckloniana</i>
Medium	<i>Osteospermum calcicola</i>
Medium	<i>Helichrysum bachmannii</i>
Medium	<i>Agathosma thymifolia</i>
Medium	<i>Limonium acuminatum</i>
Medium	<i>Limonium purpuratum</i>
Medium	<i>Muraltia harveyana</i>
Medium	Sensitive species 333
Medium	Sensitive species 156
Medium	<i>Silene ornata</i>
Medium	<i>Silene saldanhensis</i>
Medium	<i>Phylica greyii</i>
Medium	<i>Wiborgiella dahlgrenii</i>
Medium	<i>Argyrobium velutinum</i>
Medium	<i>Xiphotheca reflexa</i>
Medium	Sensitive species 599
Medium	<i>Cotula pusilla</i>
Medium	<i>Helichrysum dunense</i>
Medium	<i>Muraltia obovata</i>
Medium	Sensitive species 1225

# MAP OF RELATIVE TERRESTRIAL BIODIVERSITY THEME SENSITIVITY



Very High sensitivity	High sensitivity	Medium sensitivity	Low sensitivity
X			

## Sensitivity Features:

Sensitivity	Feature(s)
Very High	CBA: Terrestrial
Very High	CBA2: Terrestrial
Very High	CR_Saldanha Limestone Strandveld
Very High	EN_Saldanha Flats Strandveld